



HOPE
-Hill

Hope-Hill Elementary
IGNITE HOPE

Principal's Chat
May 2024

Agenda

I. Call to Order

II. Roll Call; Establish Quorum

III. Action Item

- a. Approval of Previous Minutes:
- b. Additional Action Item

IV. Discussion Items

- a. 2024 Spring MAPS results
- b. Needs Assessment

V. Information Items

- a. Principal's Report
 - a. Year review and next year's preview
 - b. 2023-2024 Family Engagement and/or Partnership Highlights
- b. Cluster Advisory Team Report
- c. GO Team Elections

VI. Announcements

VII. Public Comment

VIII. Adjournment

Agenda

- I. MAP Data Fall to Spring**
- II. End-of-Year Reviews**
- III. 24-25 Year Preview**
- IV. Important Dates**



School	Window	Exams				
DISTRICT	Fall 2023-2024	17,974	37%	28%	23%	12%
	Spring 2023-2024	18,334	39%	26%	23%	12%

School	Window	Exams				
Burgess	Fall 2023-2024	322	15%	22%	35%	28%
	Spring 2023-2024	330	18%	18%	34%	31%
Beecher	Fall 2023-2024	146	23%	27%	35%	15%
	Spring 2023-2024	144	27%	31%	30%	13%
Hope-Hill	Fall 2023-2024	224	44%	29%	16%	10%
	Spring 2023-2024	240	43%	28%	18%	10%
Deerwood	Fall 2023-2024	274	44%	31%	18%	7%
	Spring 2023-2024	302	44%	29%	20%	7%
BAMO	Fall 2023-2024	156	46%	33%	22%	
	Spring 2023-2024	159	42%	31%	24%	4%

School	Window	Exams				
DISTRICT	Fall 2023-2024	17,974	37%			
	Spring 2023-2024	18,334	39%			

School	Tested Gra..	Window	Exams				
DISTRICT	02	Spring 2023-2..	2,802	37%			
	03	Spring 2023-2..	2,767	41%			
	04	Spring 2023-2..	2,844	36%			
	05	Spring 2023-2..	2,667	32%			
	06	Spring 2023-2..	2,389	42%			
	07	Spring 2023-2..	2,475	45%			
	08	Spring 2023-2..	2,390	40%			

School	Window	Exams				
Hope-Hill	Fall 2023-2024	224	44%			
	Spring 2023-2024	240	43%			

School	Grade	Window	Exams				
Hope-Hill	02	Spring 2023-2024	71	51%			
	03	Spring 2023-2024	49	39%			
	04	Spring 2023-2024	57	49%			
	05	Spring 2023-2024	63	32%			

School	Window	Exams				
DISTRICT	Fall 2023-2024	17,915	35%	37%	20%	9%
	Spring 2023-2024	18,246	39%	33%	18%	10%

School	Window	Exams				
Burgess	Fall 2023-2024	322	14%	37%	36%	13%
	Spring 2023-2024	330	15%	34%	35%	16%
Beecher	Fall 2023-2024	146	23%	42%	29%	5%
	Spring 2023-2024	144	24%	46%	20%	10%
Hope-Hill	Fall 2023-2024	223	37%	41%	20%	
	Spring 2023-2024	238	43%	39%	16%	
Deerwood	Fall 2023-2024	274	36%	45%	14%	4%
	Spring 2023-2024	302	45%	39%	12%	4%
BAMO	Fall 2023-2024	157	43%	47%	10%	
	Spring 2023-2024	159	46%	39%	14%	

School	Window	Exams				
DISTRICT	Fall 2023-2024	17,915	35%	37%	20%	9%
	Spring 2023-2024	18,246	39%	33%	18%	10%

School	Tested Gra..	Window	Exams				
DISTRICT	02	Spring 2023-2..	2,779	27%	40%	21%	12%
	03	Spring 2023-2..	2,744	36%	31%	23%	10%
	04	Spring 2023-2..	2,828	35%	32%	24%	9%
	05	Spring 2023-2..	2,661	43%	33%	17%	7%
	06	Spring 2023-2..	2,380	41%	34%	16%	10%
	07	Spring 2023-2..	2,468	48%	30%	12%	10%
	08	Spring 2023-2..	2,386	45%	32%	12%	11%

School	Window	Exams				
Hope-Hill	Fall 2023-2024	223	37%	41%	20%	
	Spring 2023-2024	238	43%	39%	16%	

School	Grade	Window	Exams				
Hope-Hill	02	Spring 2023-2024	70	30%	53%	14%	
	03	Spring 2023-2024	49	45%	31%	20%	
	04	Spring 2023-2024	56	46%	34%	18%	
	05	Spring 2023-2024	63	54%	33%	13%	

Scott	Fall to Spring (same school year)	264	30%	14%	14%	19%	24%	
Hope-Hill	Fall to Spring (same school year)	326	23%	18%	17%	17%	26%	
Deerwood	Fall to Spring (same school year)	371	22%	14%	21%	19%	23%	
West Manor	Fall to Spring (same school year)	228	23%	14%	21%	11%	31%	
Burgess	Fall to Spring (same school year)	513	18%	17%	24%	19%	22%	
Harper-Archer ES	Fall to Spring (same school year)	425	26%	14%	19%	15%	26%	
Benteen	Fall to Spring (same school year)	247	21%	19%	19%	20%	21%	
E Rivers	Fall to Spring (same school year)	603	26%	16%	17%	17%	24%	
Howard	Fall to Spring (same school year)	957	20%	18%	20%	20%	21%	
Tuskegee	Fall to Spring (same school year)	387	25%	18%	17%	16%	25%	
Growth Quintile by Timeframe		ear)	246	25%	19%	15%	16%	25%
Low %ile <21	HiAvg %ile 61-80	ear)	528	25%	18%	17%	18%	22%
LoAvg %ile 21-40	High %ile >80	ear)	236	28%	19%	14%	21%	19%
Avg %ile 41-60		ear)	177	25%	21%	14%	17%	23%
		ear)	256	29%	16%	16%	14%	25%

School	Grade	Exams						
Hope-Hill	KK	56	14%	9%	9%	21%	46%	
	01	57	32%	26%	11%	14%	18%	
	02	61	26%	26%	11%	16%	20%	
	03	46	17%	9%	22%	15%	37%	
	04	49	29%	20%	22%	12%	16%	
	05	57	18%	16%	26%	21%	19%	

Hope-Hill	Fall to Spring (same school year)	323	31%	19%	18%	12%	20%
King	Fall to Spring (same school year)	695	31%	22%	17%	13%	18%
BEST MS/HS	Fall to Spring (same school year)	173	24%	25%	20%	15%	16%
Jones	Fall to Spring (same school year)	384	34%	17%	18%	14%	17%
Growth Quintile by Timeframe							
Low %ile <21	HiAvg %ile 61-80						
LoAvg %ile 21-40	High %ile >80						
Avg %ile 41-60							
	Fall to Spring (same school year)	304	35%	20%	15%	13%	17%
	Fall to Spring (same school year)	547	29%	24%	17%	13%	17%
	Fall to Spring (same school year)	582	35%	21%	15%	15%	14%
	Fall to Spring (same school year)	284	27%	19%	25%	14%	14%

School	Grade	Exams					
Hope-Hill	KK	56	16%	14%	14%	9%	46%
	01	57	32%	19%	14%	19%	16%
	02	60	33%	27%	17%	13%	10%
	03	46	24%	15%	17%	15%	28%
	04	49	45%	22%	18%	6%	8%
	05	55	38%	15%	27%	11%	9%

Smith	Fall to Spring (same school year)	103	12%	20%	29%	24%	15%
Hope-Hill	Fall to Spring (same school year)	55	16%	24%	22%	18%	20%
Continental	Fall to Spring (same school year)	37	27%	19%	16%	16%	22%
Young	Fall to Spring (same school year)	518	32%	15%	16%	16%	21%
Scott	Fall to Spring (same school year)	41	27%	20%	17%	17%	20%
Fickett	Fall to Spring (same school year)	52	23%	27%	13%	12%	25%
King	Fall to Spring (same school year)	460	27%	19%	19%	17%	18%
Humphries	Fall to Spring (same school year)	29	31%	21%	14%	14%	21%
Jones	Fall to Spring (same school year)	59	31%	19%	17%	17%	17%
Long	Fall to Spring (same school year)	83	17%	29%	20%	18%	16%
Bunche	Fall to Spring (same school year)	52	25%	23%	19%	13%	19%
Invictus	Fall to Spring (same school year)	56	13%	23%	32%	21%	11%
Usher-Collier	Fall to Spring (same school year)	60	33%	22%	13%	10%	22%
Parkside	Fall to Spring (same school year)	99	26%	15%	27%	23%	8%
Sylvan	Fall to Spring (same school year)	148	32%	17%	20%	18%	14%
Hope-Hill	Fall to Spring (same school year)	541	35%	18%	17%	13%	16%
Continental	Fall to Spring (same school year)	542	36%	20%	16%	15%	13%
Young	Fall to Spring (same school year)	50	22%	28%	22%	16%	12%
Scott	Fall to Spring (same school year)	63	22%	14%	37%	10%	17%
Fickett	Fall to Spring (same school year)	312	34%	22%	17%	14%	13%

Growth Quintile by Timeframe



School	Grade	Exams					
Hope-Hill	05	55	16%	24%	22%	18%	20%

Needs Assessment

ACTIVITY



Needs Assessment

During this Needs Assessment, we will look at data from the Spring MAPS administration and identify 2-3 potential needs for the 2024-2025 school year.

This discussion will help school leadership as they complete the school's 2024-2025 Continuous Improvement Plan.

Needs Assessment: Guiding Questions

What does this data tell us?

What good news is there to celebrate?

Where are growth opportunities?

What trends do we see in the data?



Needs Assessment:

What are two to three (2-3) needs we can identify based our data?

	Need
1	
2	
3	



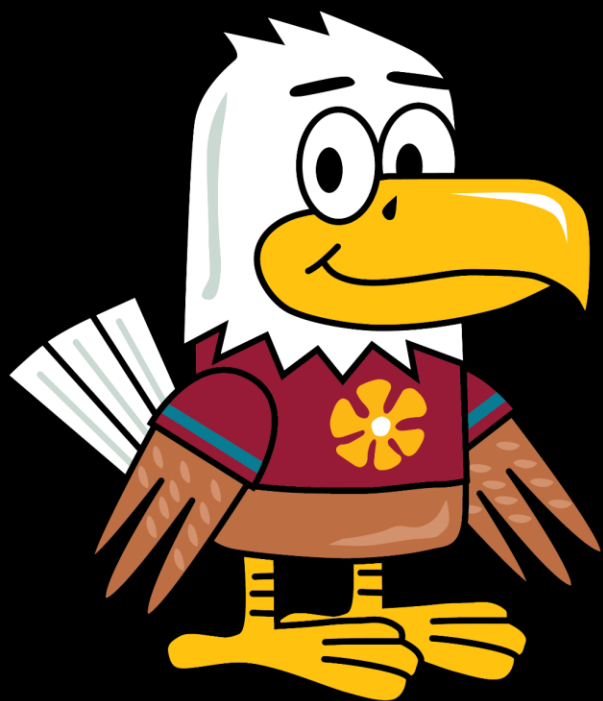


Priorities for 2023-2024

15

1. **STEAM:** Do more STEAM-related activities. One grade-level STEAM experience.
2. **Communication:** Increase communication with stakeholders
3. **Instruction:** Continue best practices
4. **Budget:** Maximize funding
5. **Whole Child:** Increase access to basic needs for students and families





HOR
-Hill

John Hope - Charles Walter Hill
Elementary School

Goals for Next Year 2024-2025

18

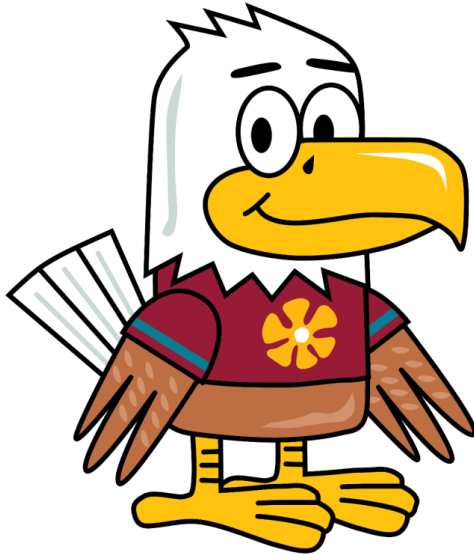
1. **STEAM:** Working with ArtsNow to integrate more Arts into the standard curriculum. To assist with STEAM certification.
2. **Communication:** Parent handbook and opt-into paper communication
3. **Instruction:** Continue STEAM field trips at each grade level; Readers are Leaders; and teacher development with new math standards.
4. **Budget:** We have invested in staffing to support students and student experiences.
5. **Attendance:** Working creatively and collaboratively to improve overall attendance.
6. **Whole Child:** Partnered with Ebenezer to provide whole child services

LET'S LOOK AT THE NUMBERS

	PK	K	1	2	3	4	5
2023-2024	39	68	70	74	50	56	62
Projections 2024-2025	40	65	71	61	72	46	56
Difference grade to grade		-3	+1	-7	+12	-10	-6
Difference cohort to cohort			+3	-9	-2	-4	-0
Notes	<ul style="list-style-type: none"> • KO4W is relocating to the Coan Building, we may have an increase in numbers. APS is reviewing numbers to see the potential impact. • I have allowed for 5 out of zone transfers per grade. • Added Inclusion PK for the cluster 						

LET'S LOOK AT THE NUMBERS

	K	1	2	3	4	5
APS Class Size	21	21	21	21	23	23
Student Projections	65	71	61	72	46	56
Teacher (Non-EIP) needed to meet APS req. 17.6	3.3	3.3	2.9	3.4	2.4	2.7
Budgeted (Non-EIP) 17	3*	3*	3	3	3	2*
Class Size	21.7*	23.6	20.3*	24	15.3	28
Notes	<ul style="list-style-type: none"> The cost of teachers and subs increased. \$90,919 to \$109,171=\$18,252 per Teacher and \$104 to \$180 for subs Cares funds ended (SRO) Not filling the three* vacant positions to make up \$304K deficient (\$109,171x3=\$327,513) and SRO transitioning to gen fund 					



Staffing Changes

- **Staff Leaving -**

- Ms. Currie- 5th Grade Teacher-Going out of district to HS
- Ms. Walker- 5th Grade Teacher-Going out of district
- Ms. Carter-IRR Teacher In-district transfer
- Ms. Campbell-Autism Teacher- Going out of district
- Ms. Cooper-Williams- SELT-Promotion within APS



Staffing Changes

- **New Staff-**

- James Cho-5th Grade Teacher
- Raheem Pough-1st Grade Teacher
- Natalie Jones-1st Grade Teacher
- Katie Yancey- PK Teacher SPED (new position)
- India Kanu-Café Monitor (new position)
- Gina Matias-SELT (shared with Mary Lin)
- TBD Pre-K Para
- TBD- 5th Grade
- TBD- Autism Teacher
- TBD- Teacher

Important Dates

July

30 Pre-k and K Orientation @ 1:15p

31 New Parent Orientation @8a

31 Open House @ 9a

Kinder Camp-July 23-24

Day 1-August 1st

Questions?

